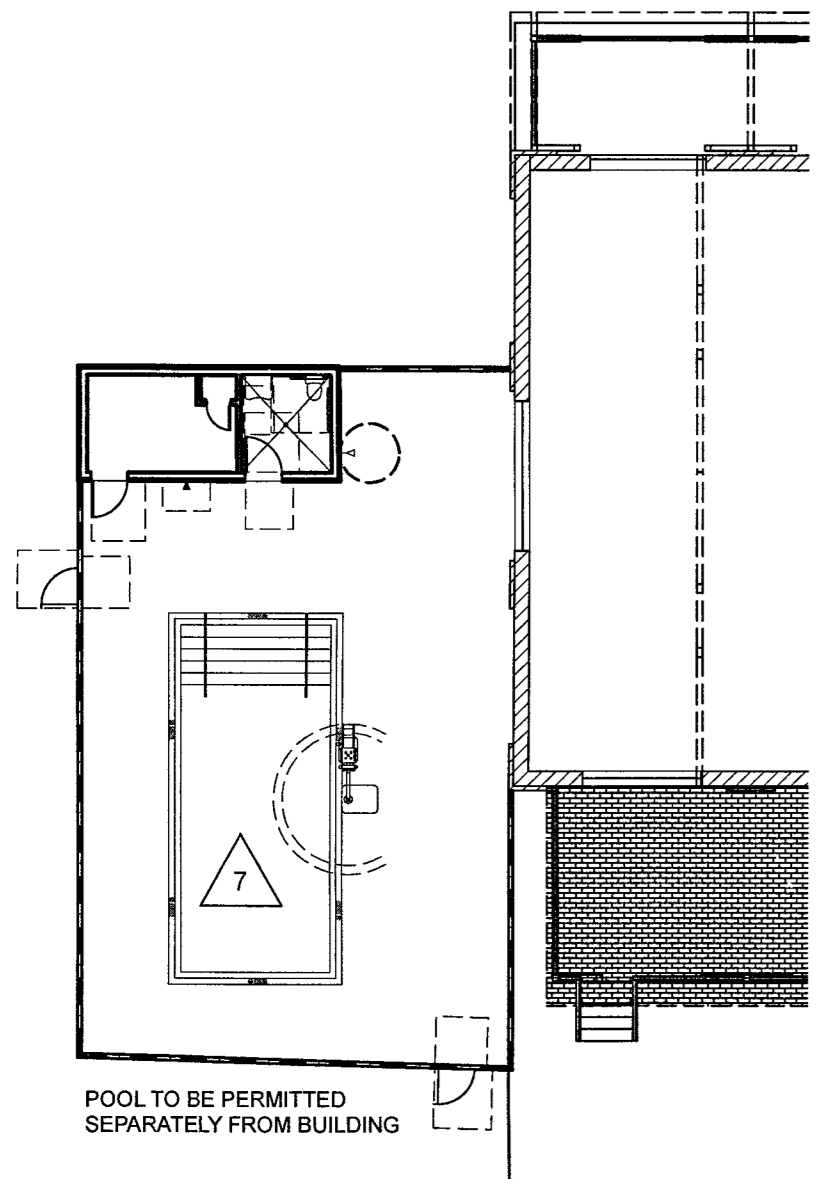


1 FIRST FLOOR PLAN
A1.1 SCALE 1/16" = 1'-0"



BUILDING SQ. FT. EXISTING		
FLOOR		SQ. FT.
1ST FLOOR PLAN	FIRST FLOOR - EXISTING	23,096
2ND FLOOR PLAN	SECOND FLOOR - EXISTING	5,872
3RD FLOOR PLAN	THIRD FLOOR - EXISTING	3,186
		32,154 sq ft

BUILDING SQ FT NEW		
FLOOR		SQ. FT.
1ST FLOOR PLAN	FIRST FLOOR - NEW	12,570
2ND FLOOR PLAN	SECOND FLOOR - NEW	12,445
3RD FLOOR PLAN	THIRD FLOOR - NEW	11,012
4TH FLOOR PLAN	FOURTH FLOOR - NEW	11,012
5TH FLOOR PLAN	FIFTH FLOOR - NEW	11,012
6TH FLOOR PLAN	SIXTH FLOOR - NEW	11,012
7TH FLOOR PLAN	SEVENTH FLOOR - NEW	8,581
		80,075 sq ft

GUESTROOM ASSIGNMENTS		
FLOOR PLAN	ROOM TYPE	QUANTITY
1ST FLOOR PLAN	ACC. Q/Q SUITE (H I)	1
	KING SUITE	2
	Q/Q SUITE	1
2ND FLOOR PLAN	ACC. KING B	1
	ACC. KING SUITE	1
	ACC. Q/Q A	1
	ACC. Q/Q B	1
	KING C (H I)	1
	KING D	1
	KING SUITE (H.I.)	1
3RD FLOOR PLAN	KING A	8
	KING B	1
	KING B (H I)	1
	KING C	1
	KING D	1
4TH FLOOR PLAN	Q/Q	11
	Q/Q (H I)	1
	KING A	8
	KING B	2
	KING C	1
5TH FLOOR PLAN	KING D (H I)	1
	Q/Q	11
	Q/Q (H I)	1
	Q/Q (H I)	1
6TH FLOOR PLAN	KING A	8
	KING B	2
	KING C (H.I.)	1
	KING D	1
7TH FLOOR PLAN	Q/Q	11
	Q/Q (H I)	1
	ACC. KING A	1
	KING A (H I)	1
	Q/Q	5
	125	

GUESTROOM ASSIGNMENTS		
FLOOR PLAN	ROOM TYPE	QUANTITY
5TH FLOOR PLAN	ACC. KING A	1
	KING A	8
	KING B	1
	KING B (H.I.)	1
	KING C	1
6TH FLOOR PLAN	Q/Q	11
	Q/Q (H I)	1
	KING A	8
	KING B	2
	KING C (H.I.)	1
7TH FLOOR PLAN	KING D	1
	Q/Q	11
	Q/Q (H I)	1
	ACC. KING A	1
	KING A (H I)	1
	Q/Q	5
	125	

ALL CONTRACTORS AND SUB-CONTRACTORS SUBMITTING BIDS ON THIS PROJECT SHALL BE REQUIRED TO RECEIVE THE ENTIRE SET OF DRAWINGS. BROKEN SETS ARE NOT ALLOWED FOR BIDDING PROJECTS. UNDER NO CIRCUMSTANCES ARE THE DRAWINGS TO BE SCALED !!

REVISIONS:
 DATE: 8/14/17, 9/17/17, 12/17/17, 1/28/18, 5/7/18, 9/17/18, 11/13/18
 BY: RCW, RCW, RCW, RCW, RCW, RCW, RCW
 COMMENTS: (1)-CITY PLAN REVIEW COMMENTS, (2)-OWNER REQUESTED REVISIONS, (3)-OWNER REQUESTED REVISIONS, (4)-OWNER REQUESTED REVISIONS, (5)-NEW HANOVER COUNTY REVIEW COMMENTS, (6)-MARRIOTT 90% REVIEW COMMENTS, (7)-MARRIOTT 90% REVIEW COMMENTS, (8)-CITY OF WILMINGTON COMMENTS

DRAWN BY: RCW, APPROVED: RWH
 PROJ #: 15030, DATE: 06/02/17

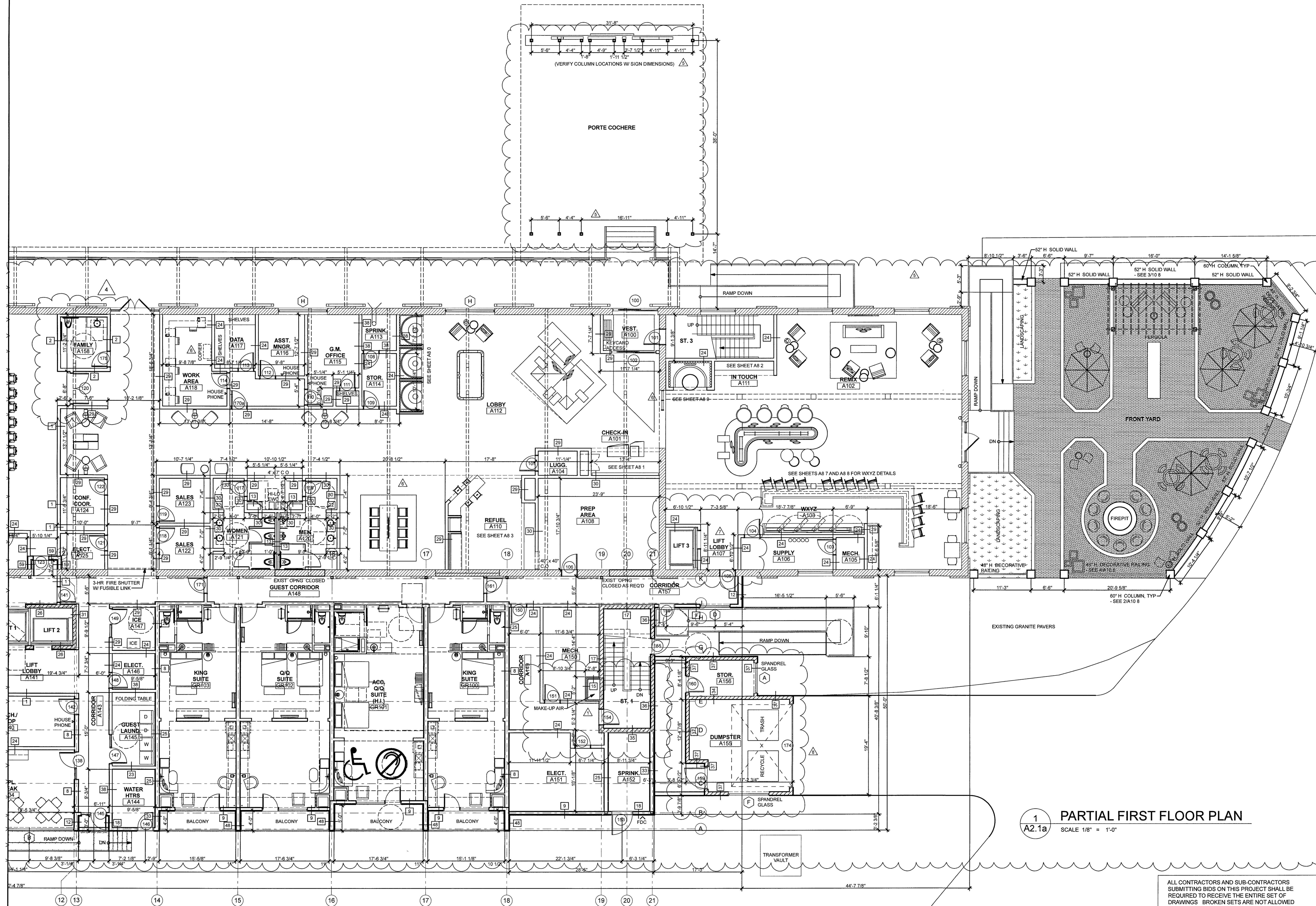
ISO HAM DESIGN GROUP PA
 50763
 WILKESBORO, NC

ROBERT W. HAM
 3956
 WILKESBORO, NC

QUALITY FIRST
isomham
 DESIGN GROUP, PA
 Architecture - Planning
 1309 Colgate Drive Wilkesboro, NC 28697 www.isomham.com
 WILMINGTON, NORTH CAROLINA

aloft
 HOTELS

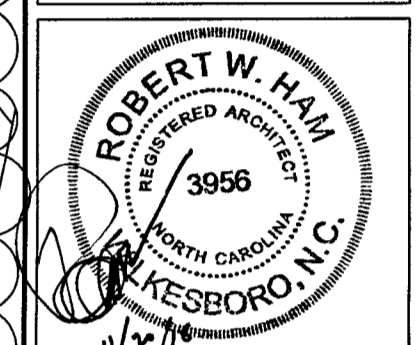
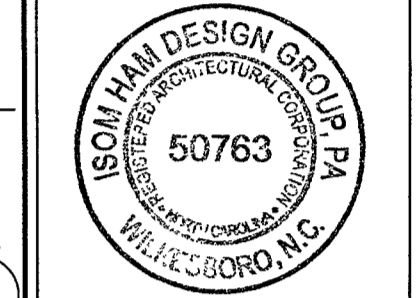
SHEET: **A1.1**
 OVERALL FIRST FLOOR PLAN



1 PARTIAL FIRST FLOOR PLAN
 A2.1a SCALE 1/8" = 1'-0"

ALL CONTRACTORS AND SUB-CONTRACTORS
 SUBMITTING BIDS ON THIS PROJECT SHALL BE
 REQUIRED TO RECEIVE THE ENTIRE SET OF
 DRAWINGS. BROKEN SETS ARE NOT ALLOWED
 FOR BIDDING PROJECTS.
 UNDER NO CIRCUMSTANCES ARE THE DRAWINGS
 TO BE SCALED !!

DATE	BY	REVISIONS
8/4/17	RCW	(1) - CITY PLAN REVIEW COMMENTS
9/11/17	RCW	(2) - OWNER REQUESTED REVISIONS
1/26/18	RCW	(3) - OWNER REQUESTED REVISIONS
5/7/18	RCW	(4) - NEW HANOVER COUNTY REVIEW COMMENTS
9/11/18	RCW	(5) - MARRIOTT 90% REVIEW COMMENTS
9/11/18	RCW	(6) - MARRIOTT 90% REVIEW COMMENTS
8/22/18	RCW	(7) - ELEVATOR 3 ORIENTATION REVISED
11/13/18	RCW	(8) - CITY OF WILMINGTON COMMENTS

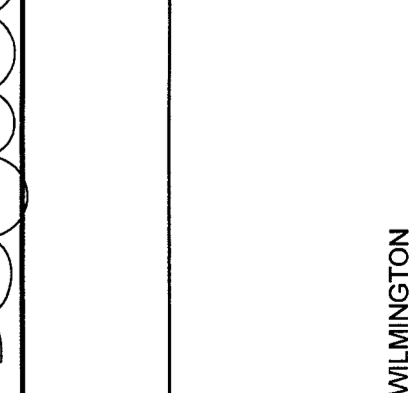


QUALITY FIRST

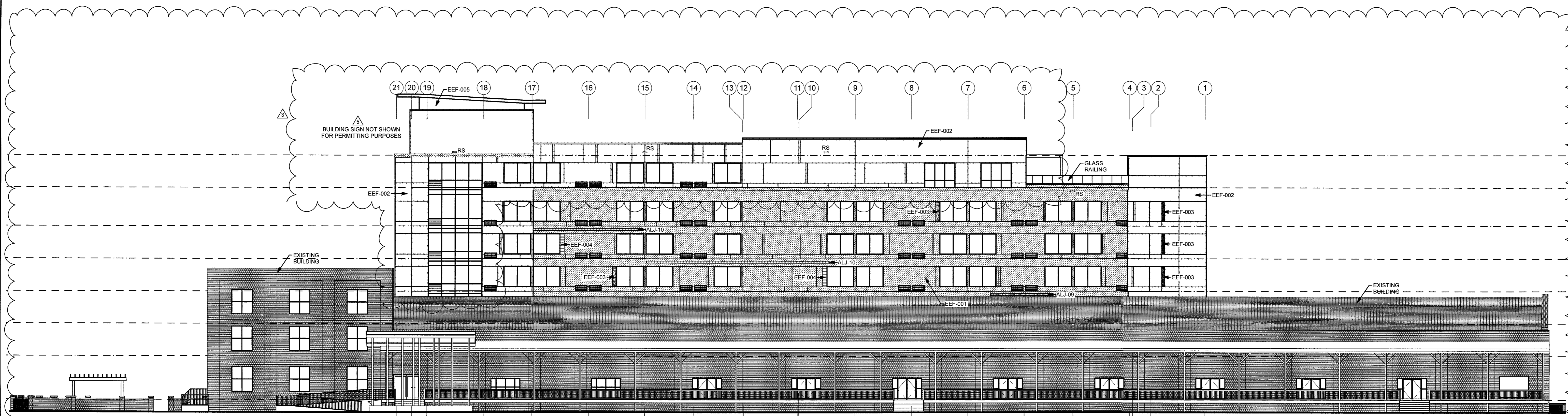
isomham
 DESIGN GROUP, PA
 Architecture - Planning
 1305 Collegiate Drive Wilkesboro, NC 28697 www.isomham.com

NORTH CAROLINA

ENLARGED FLOOR PLAN



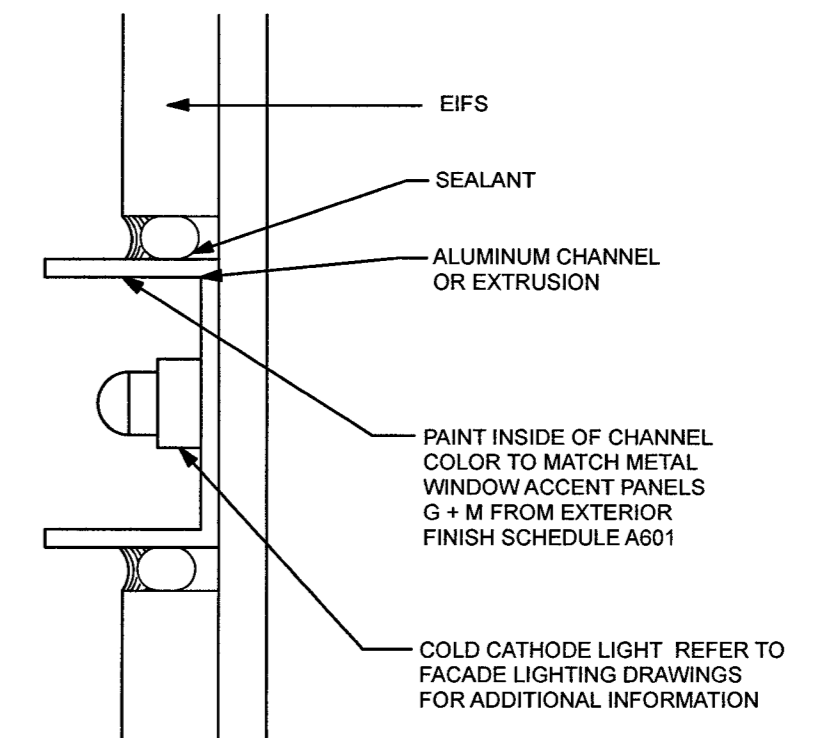
WILMINGTON
 SHEET
 A2.1a



1 NORTH ELEVATION
A6.1 SCALE 1/16" = 1'-0"

EXTERIOR FINISH LEGEND

EEF-001 EIFS - COLOR 1	ALJ-09 LIGHT STRIP	
EEF-002 EIFS - COLOR 2	ALJ-10 LIGHT STRIP	
EEF-003 EIFS - COLOR 3	EXTERIOR WALL PANEL	
EEF-004 EIFS - COLOR 4	EXISTING BRICK VENEER	
EEF-005 EIFS - COLOR 5		



4 FACADE DETAIL
A6.1 SCALE 3" = 1'-0"

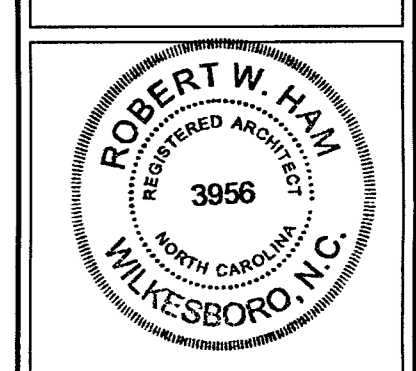
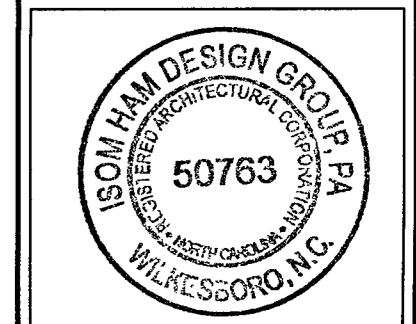


2 SOUTH ELEVATION
A6.1 SCALE 1/16" = 1'-0"

ALL CONTRACTORS AND SUB-CONTRACTORS SUBMITTING BIDS ON THIS PROJECT SHALL BE REQUIRED TO RECEIVE THE ENTIRE SET OF DRAWINGS. BROKEN SETS ARE NOT ALLOWED FOR BIDDING PROJECTS.
UNLESS OTHERWISE NOTED, THE DRAWINGS TO BE SCALED !!

DATE	BY	REVISIONS
9/11/17	RCW	(1) - OWNER REQUESTED REVISIONS
1/28/18	RCW	(2) - OWNER REQUESTED REVISIONS
5/11/18	RCW	(3) - OWNER REQUESTED REVISIONS
11/12/18	RCW	(4) - MARRIOTT 80% REVIEW COMMENTS
	RCW	(5) - CITY OF WILMINGTON COMMENTS

PROJ #	DATE	DRAWN BY	APPROVED
15030	06/02/17	RCW	RWH



QUALITY FIRST

isomham
DESIGN GROUP, PA
Architecture - Planning
1309 Collegiate Drive Wilkesboro, NC 28697 www.isomham.com

NORTH CAROLINA

EXTERIOR ELEVATIONS
aloft
HOTELS

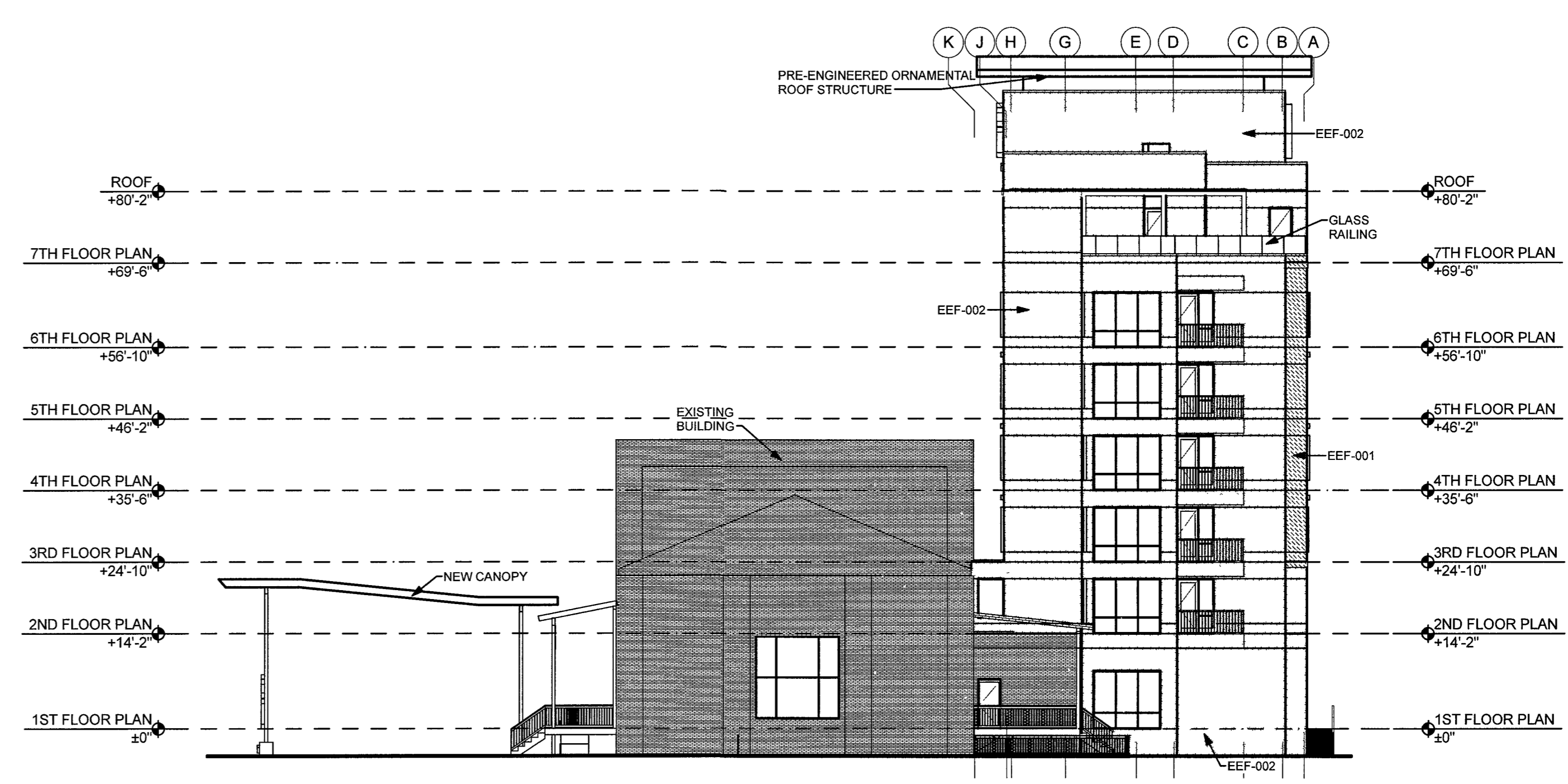
WILMINGTON

SHEET

A6.1



1 EAST ELEVATION
 A6.2 SCALE 1/16" = 1'-0"



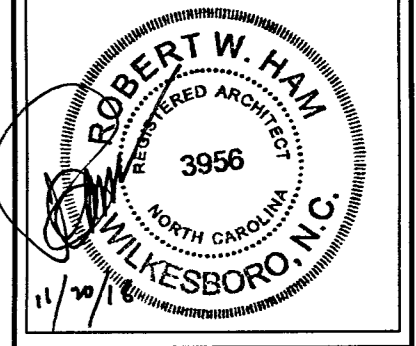
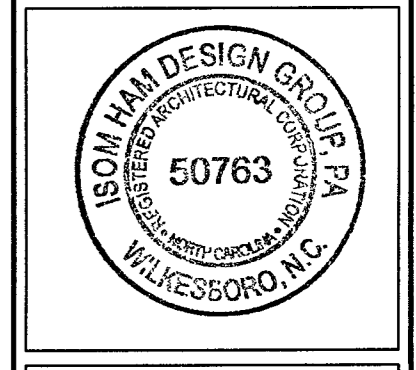
2 WEST ELEVATION
 A6.2 SCALE 1/16" = 1'-0"

EXTERIOR FINISH LEGEND

EEF-001 EIFS - COLOR 1		ALJ-09 LIGHT STRIP	
EEF-002 EIFS - COLOR 2		ALJ-10 LIGHT STRIP	
EEF-003 EIFS - COLOR 3		EXTERIOR WALL PANEL	
EEF-004 EIFS - COLOR 4		EXISTING BRICK VENEER	
EEF-005 EIFS - COLOR 5			

DATE	BY	REVISIONS
9/1/17	RCW	(1) - OWNER REQUESTED REVISIONS
1/26/18	RCW	(2) - OWNER REQUESTED REVISIONS
5/1/18	RCW	(3) - MARRIOTT 90% REVIEW COMMENTS
11/13/18	RCW	(4) - CITY OF WILMINGTON COMMENTS

DRAWN BY	APPROVED
RCW	RWH
PROJ #	DATE
15030	06/02/17



QUALITY FIRST

isom ham
 DESIGN GROUP, P.A.
 Architecture - Planning
 1309 Collegiate Drive Wilkesboro, NC 28697 www.isomham.com

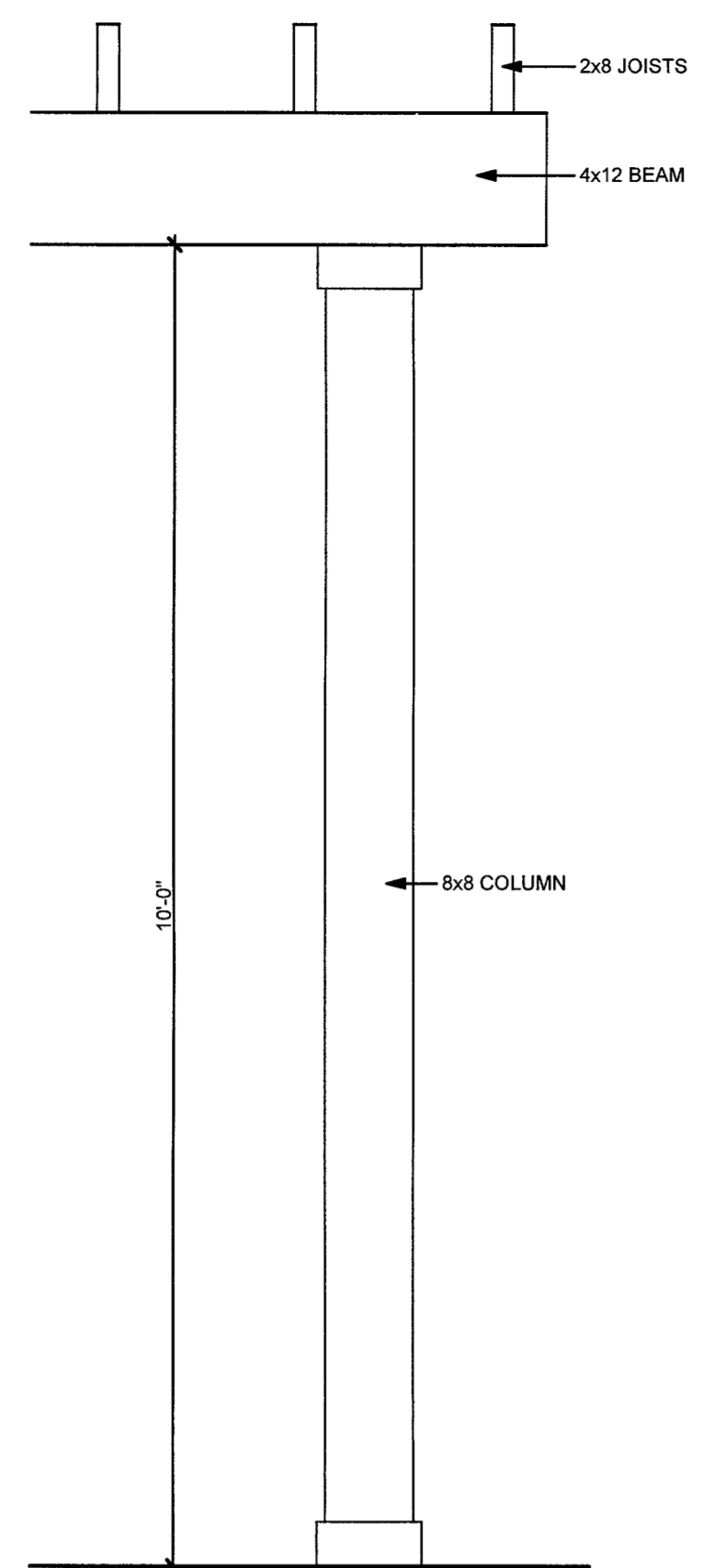
EXTERIOR ELEVATIONS

Aloft
 HOTELS

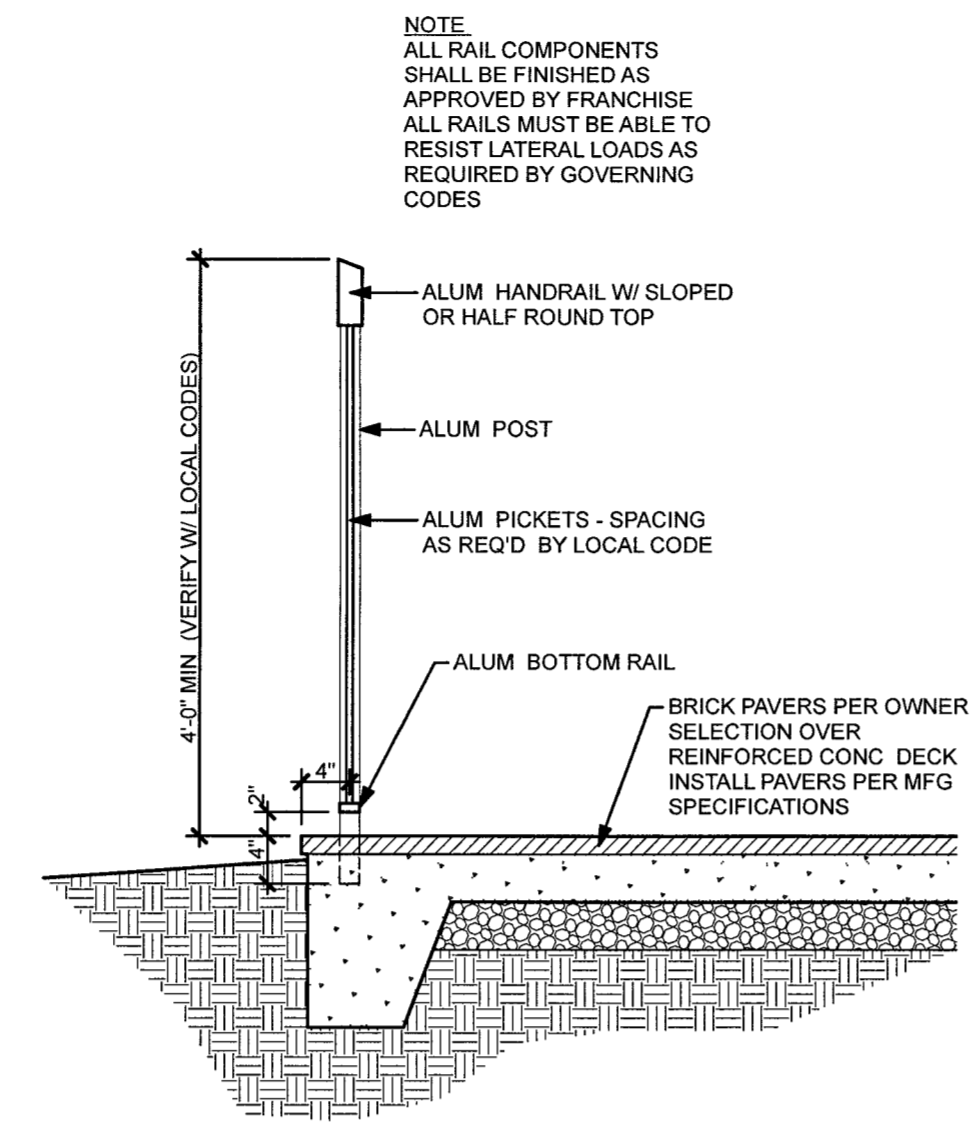
NORTH CAROLINA

ALL CONTRACTORS AND SUB-CRONTACTORS SUBMITTING BIDS ON THIS PROJECT SHALL BE REQUIRED TO RECEIVE THE ENTIRE SET OF DRAWINGS. BROKEN SETS ARE NOT ALLOWED FOR BIDDING PROJECTS. UNDER NO CIRCUMSTANCES ARE THE DRAWINGS TO BE SCALED !!

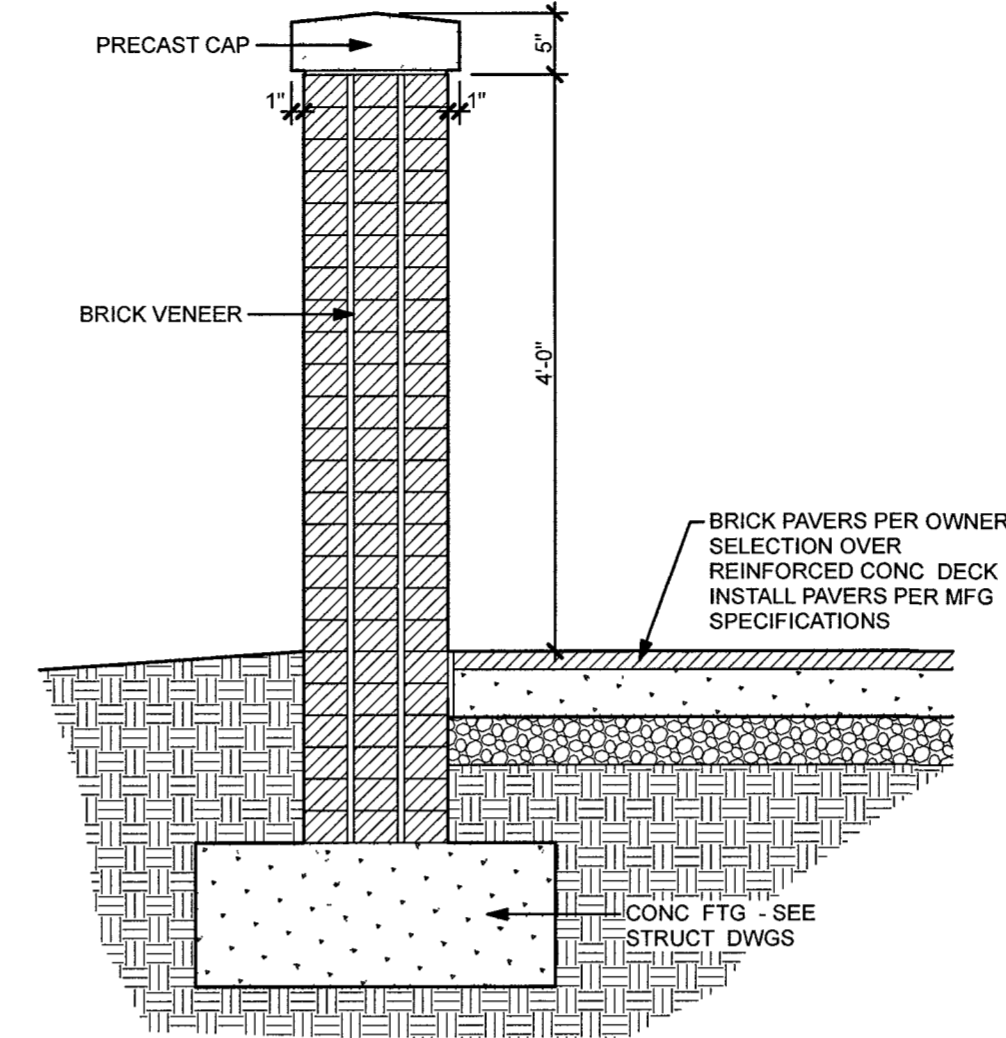
SHEET
A6.2



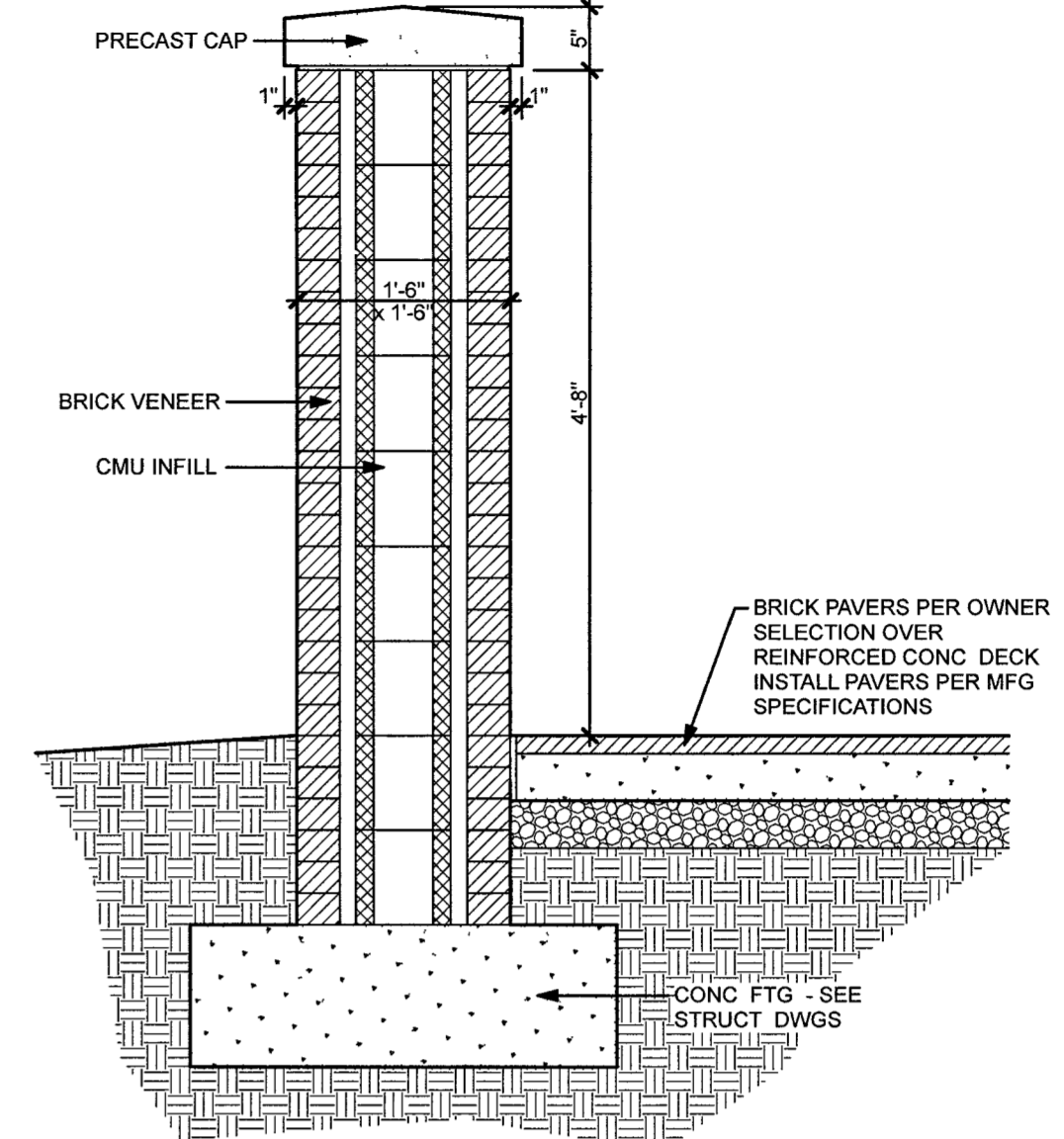
5 FRONT YARD TRELLIS
A10.8 SCALE 3/4" = 1'-0"



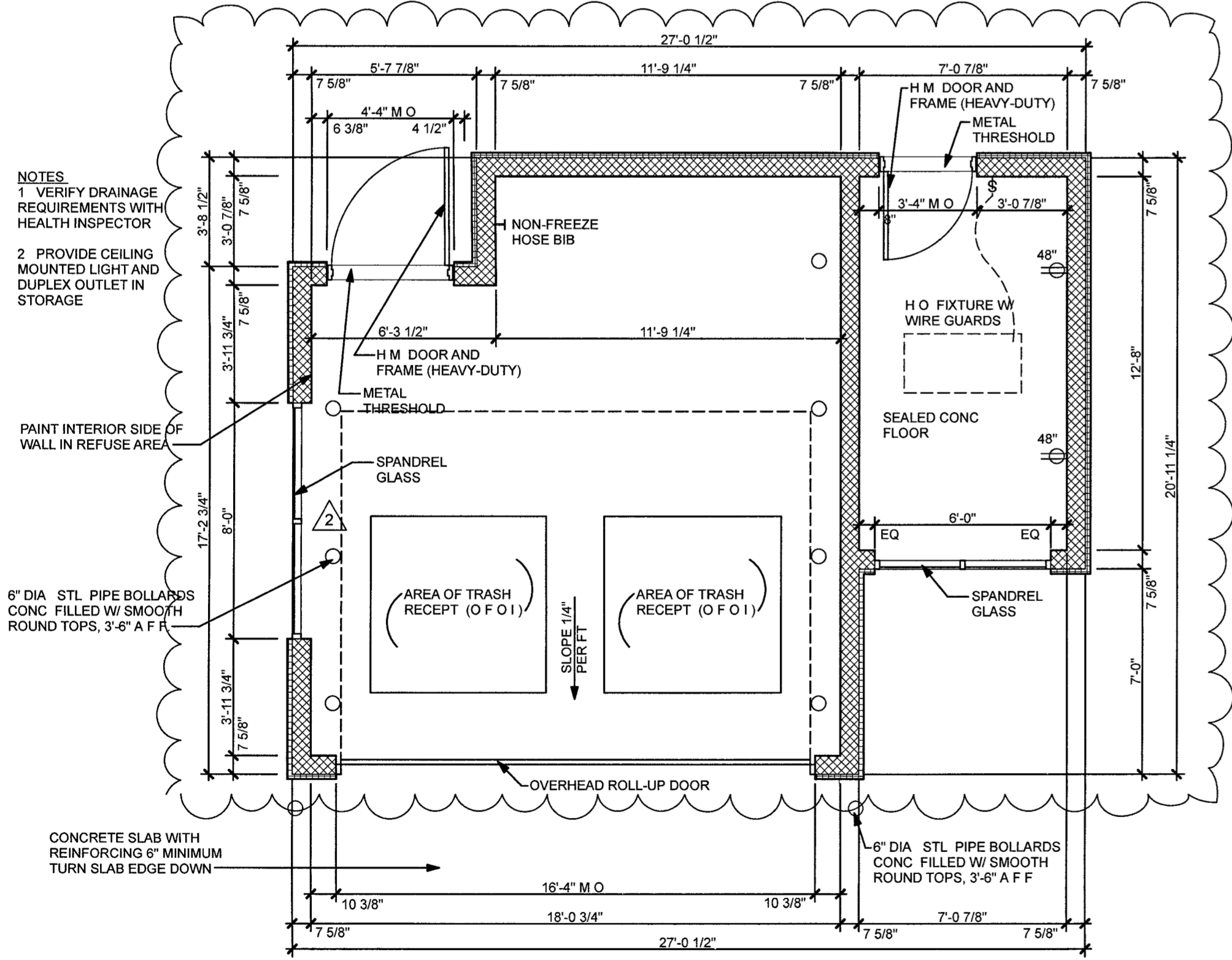
4 FRONT YARD RAIL
A10.8 SCALE 3/4" = 1'-0"



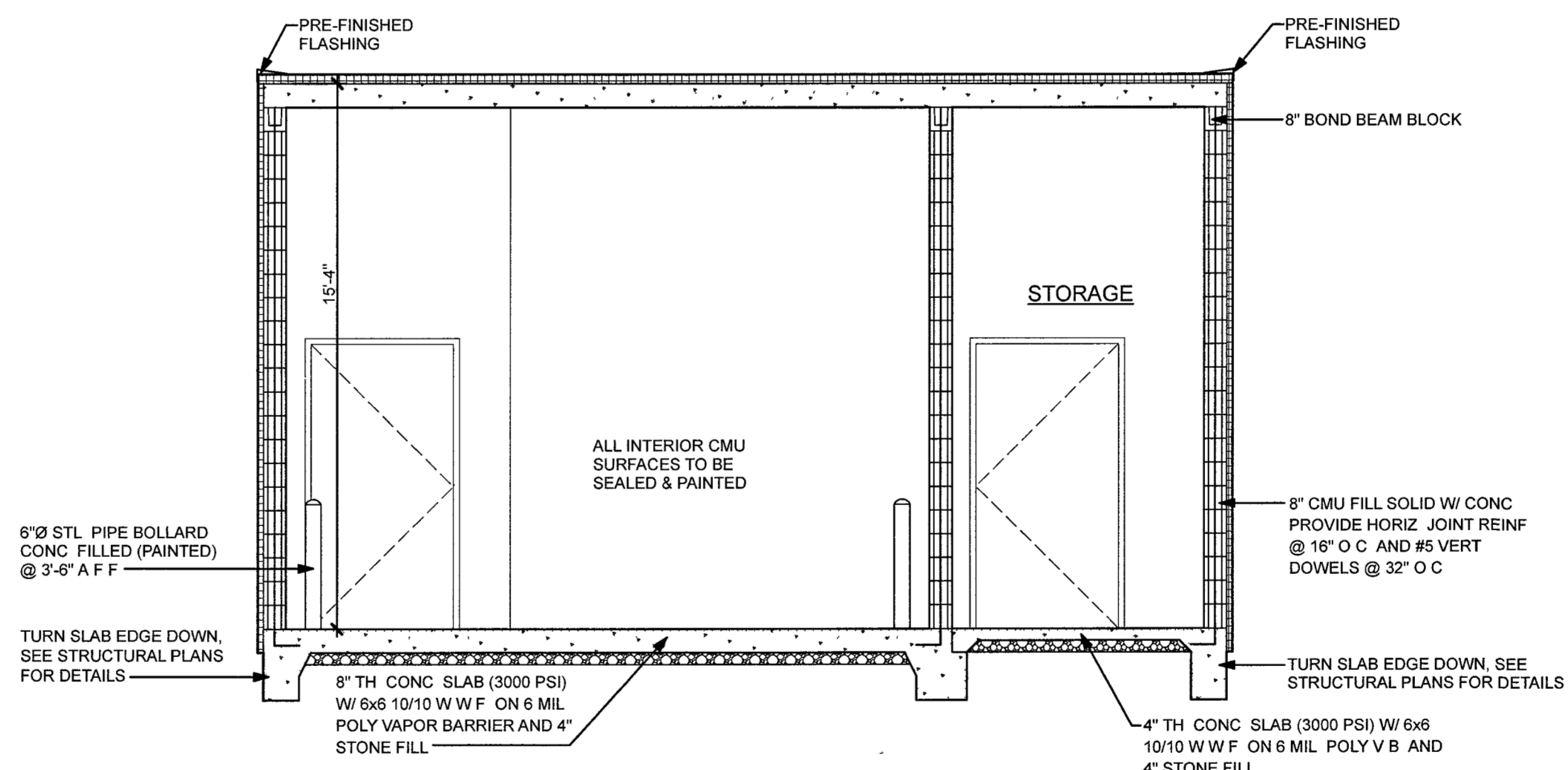
3 FRONT YARD WALL
A10.8 SCALE 3/4" = 1'-0"



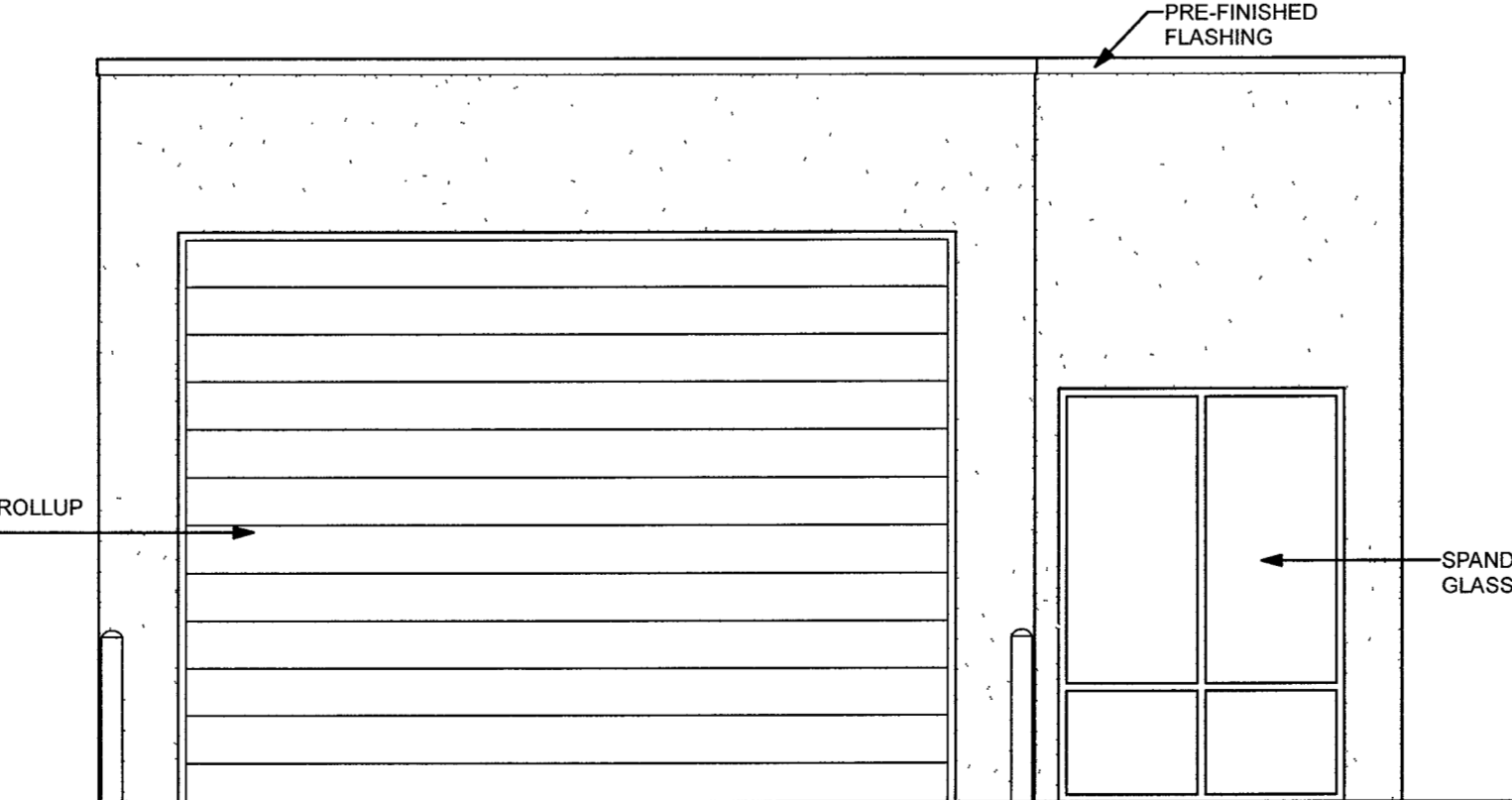
2 FRONT YARD COLUMN
A10.8 SCALE 3/4" = 1'-0"



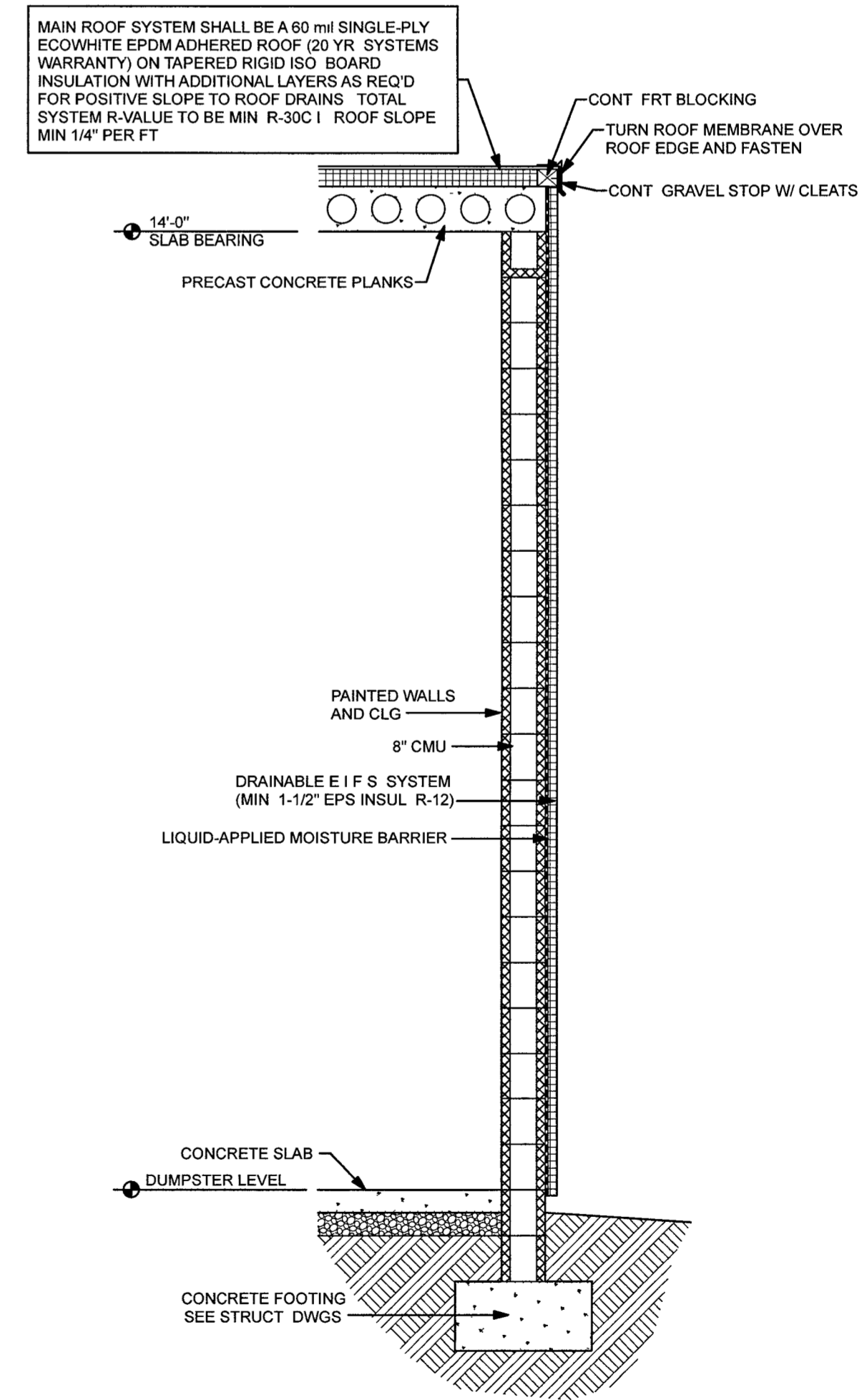
1 DUMPSTER/STORAGE PLAN
A10.8 1/4"=1'-0"



2 DUMPSTER/STORAGE SECTION
A10.8 1/4"=1'-0"



3 DUMPSTER/STORAGE ELEVATION
A10.8 1/4"=1'-0"



6 DUMPSTER SECTION
A10.8 SCALE 1/2" = 1'-0"

ALL CONTRACTORS AND SUB-CONTRACTORS SUBMITTING BIDS ON THIS PROJECT SHALL BE REQUIRED TO RECEIVE THE ENTIRE SET OF DRAWINGS. BROKEN SETS ARE NOT ALLOWED FOR BIDDING PROJECTS. UNDER NO CIRCUMSTANCES ARE THE DRAWINGS TO BE SCALED !!

DATE	REVISIONS	BY	ROW
11/12/18	(1) - OWNER REQUESTED REVISIONS		
12/21/18	(2) - DUMPSTER WALL SECTION ADDED		

DRAWN BY RCW	APPROVED RVH
PROJ # 15030	DATE 06/02/17

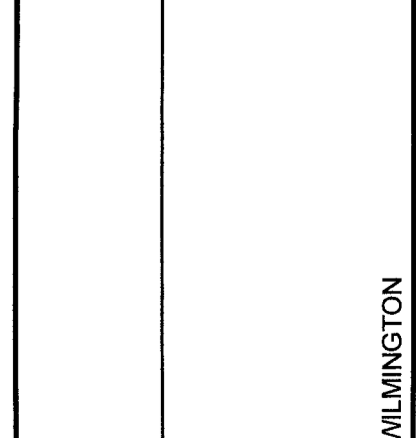


QUALITY FIRST

isomham
DESIGN GROUP, PA
Architecture • Planning
1309 Collegate Drive Wilkesboro, NC 28697 www.isomham.com

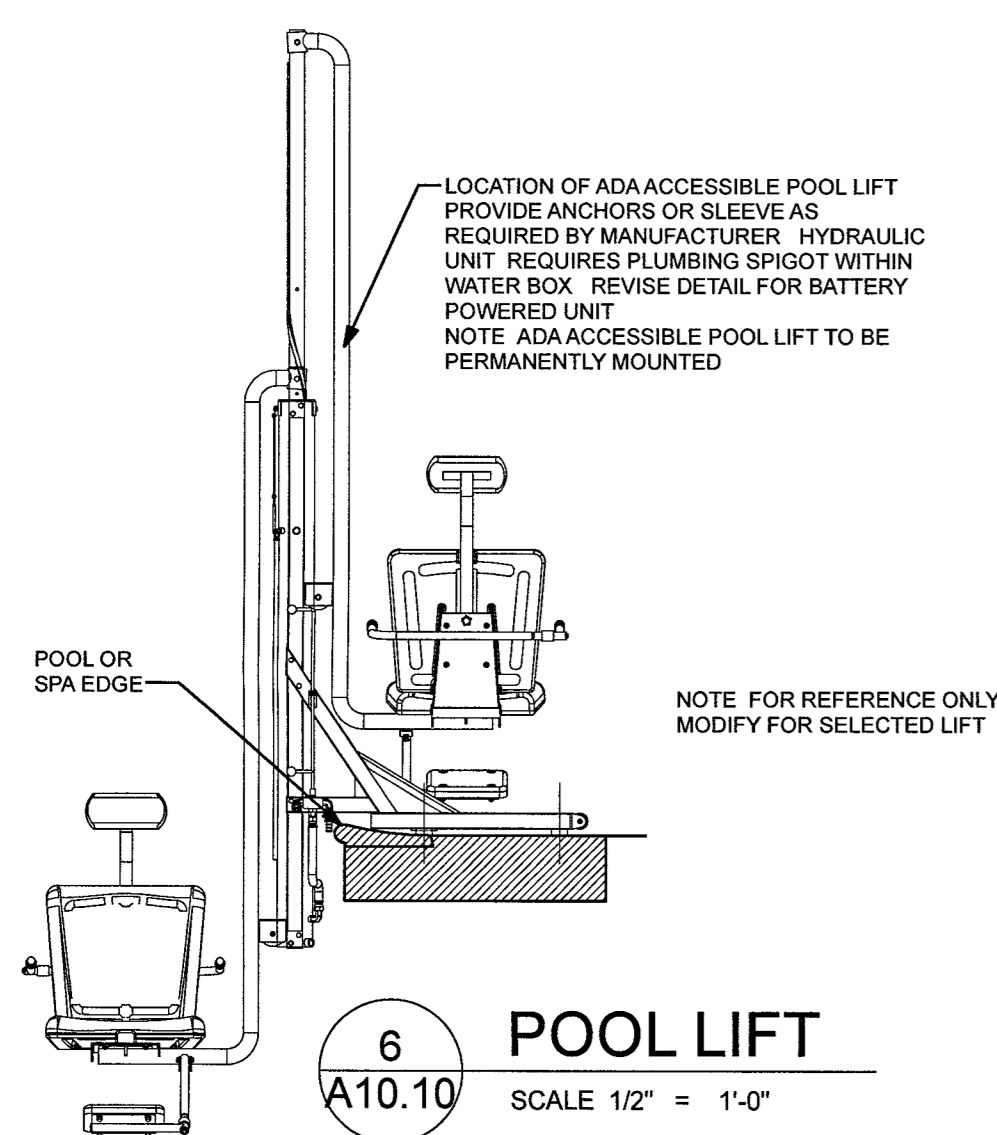
NORTH CAROLINA

DUMPSTER DETAILS

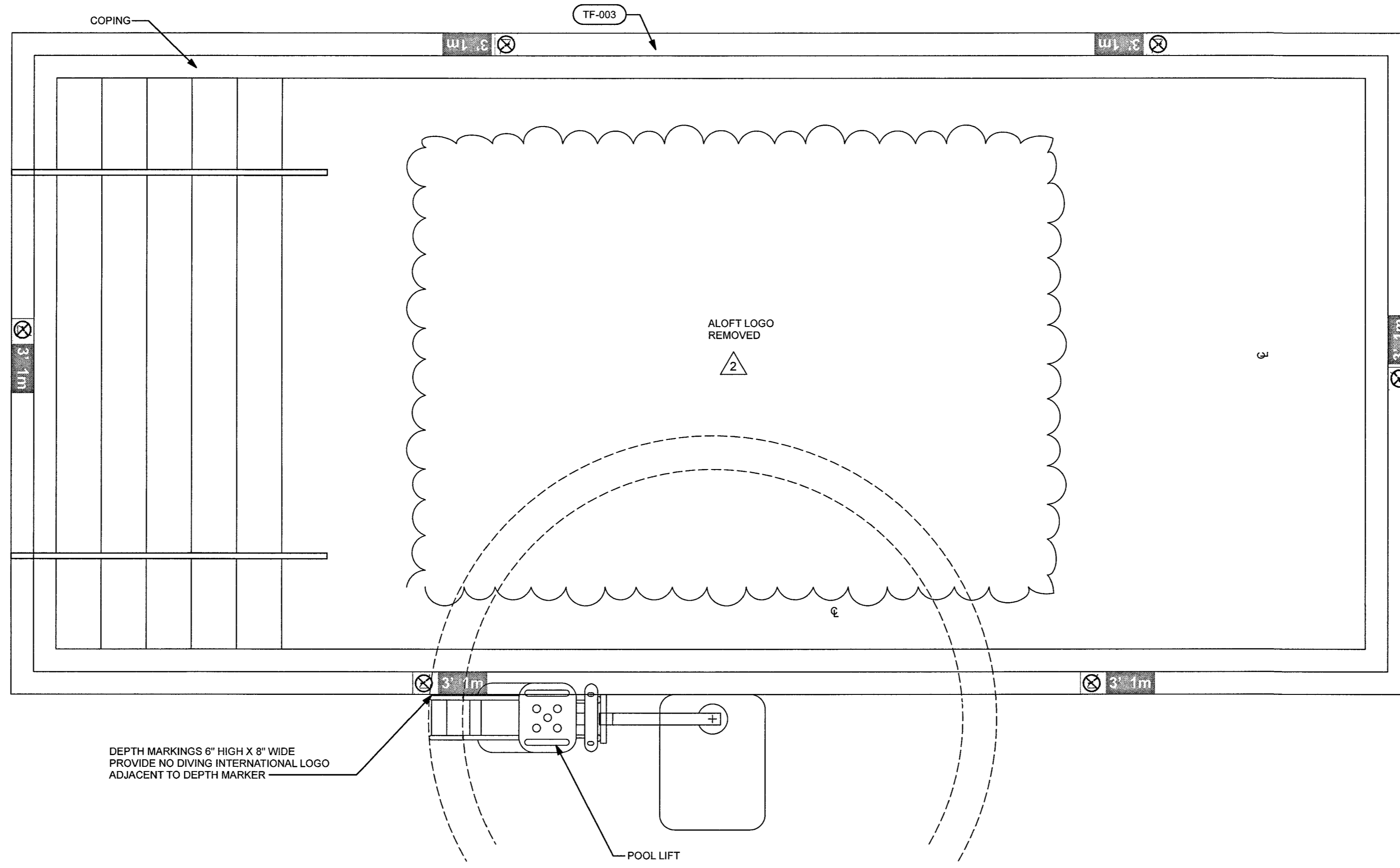


WILMINGTON

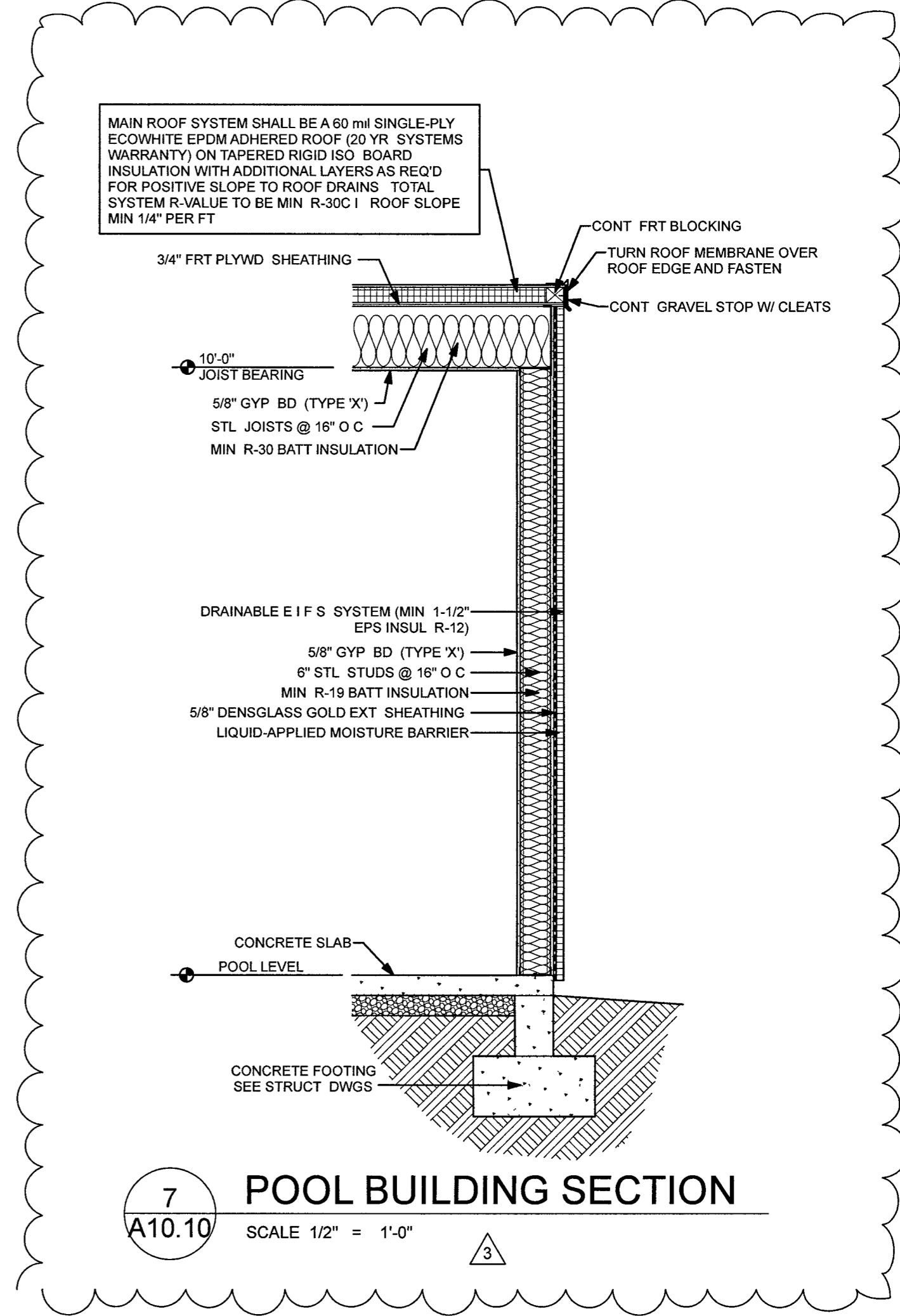
SHEET
A10.8



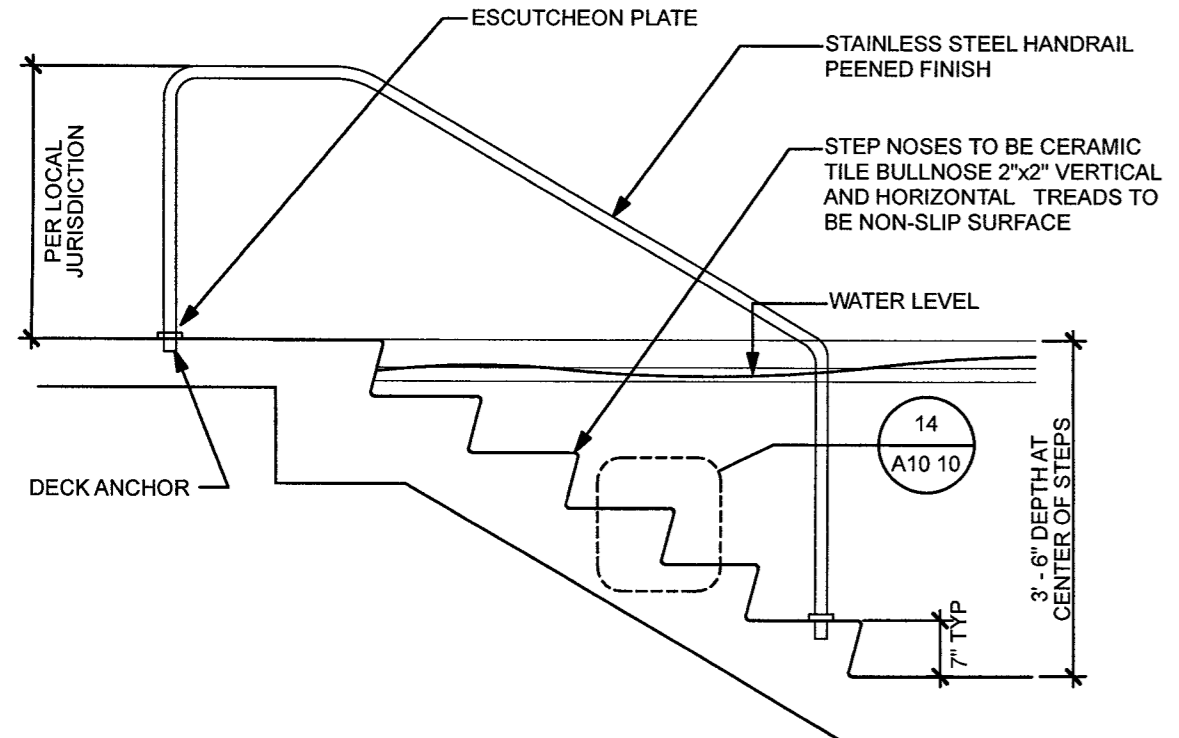
6
A10.10 SCALE 1/2" = 1'-0"



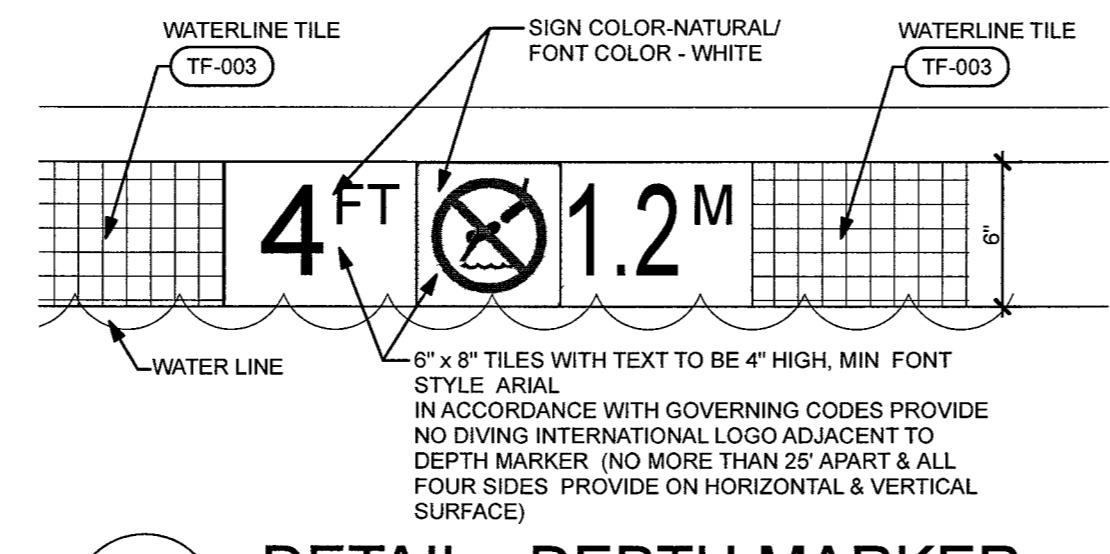
3
A10.10 SCALE 1/2" = 1'-0"



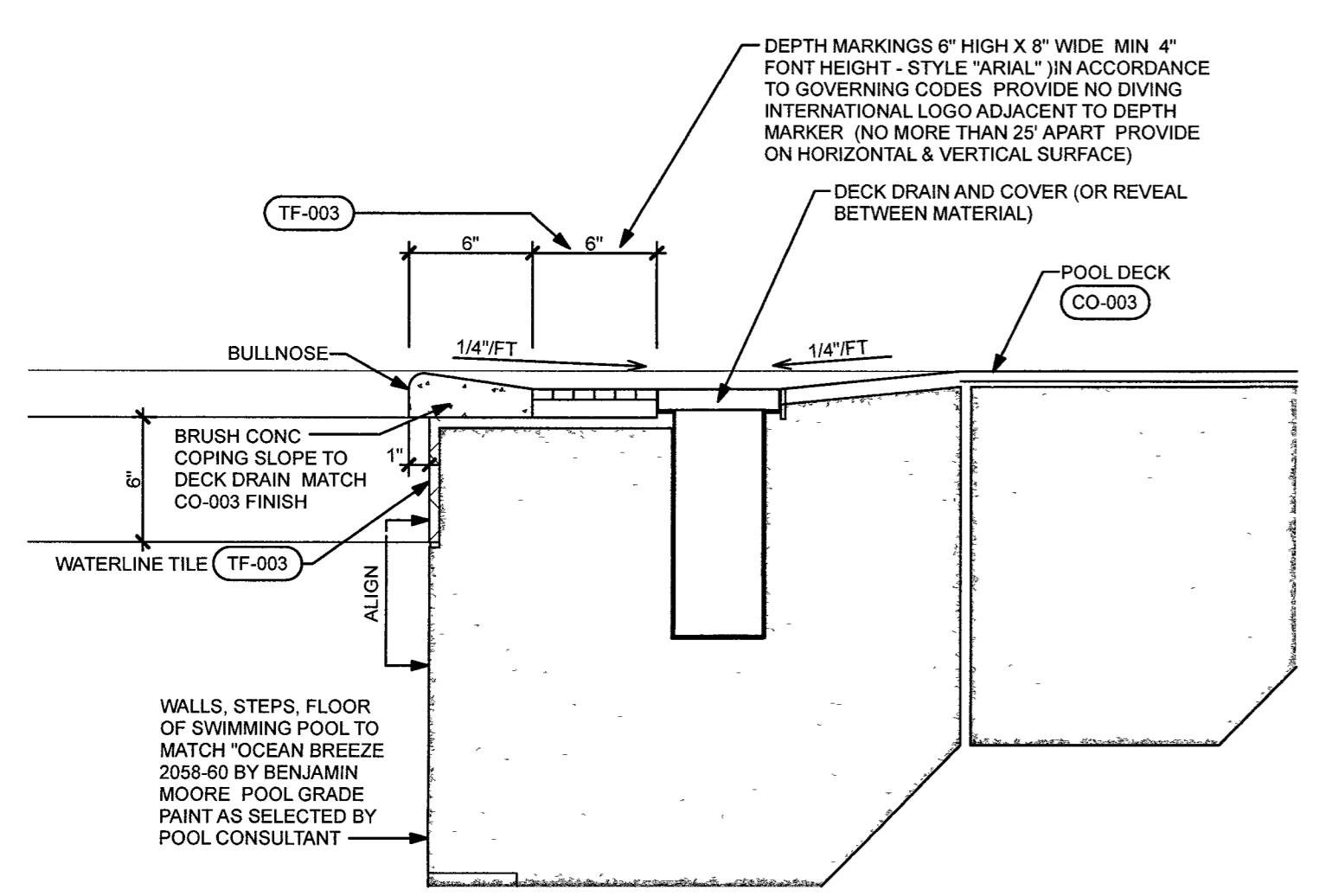
7
A10.10 SCALE 1/2" = 1'-0"



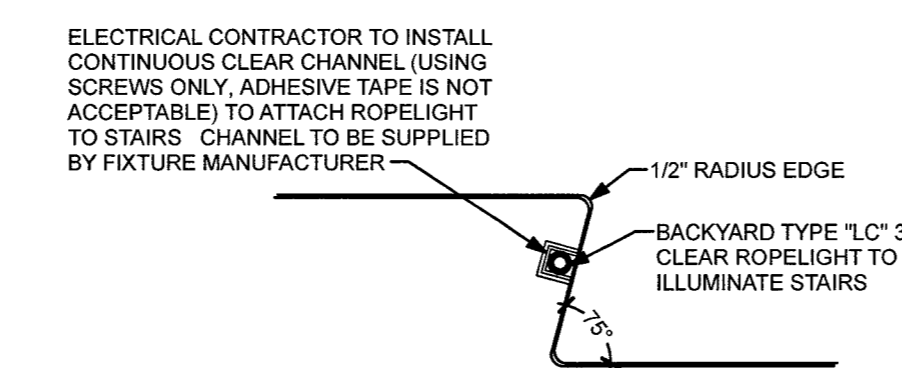
13
A10.10 SCALE 1/2" = 1'-0"



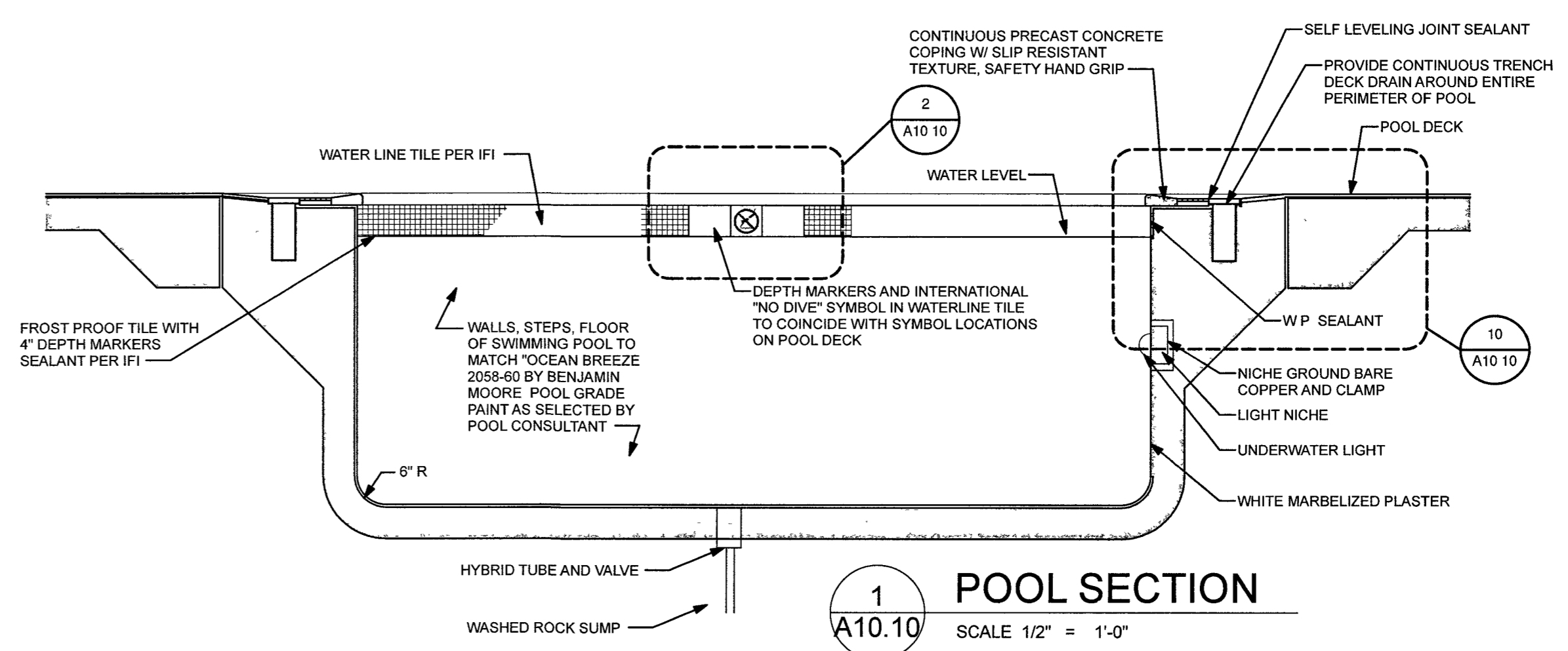
2
A10.10 SCALE 1 1/2" = 1'-0"



10
A10.10 SCALE 1 1/2" = 1'-0"



14
A10.10 SCALE 1 1/2" = 1'-0"

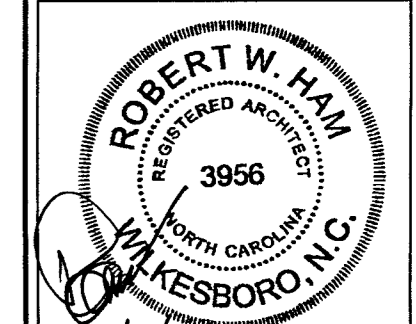
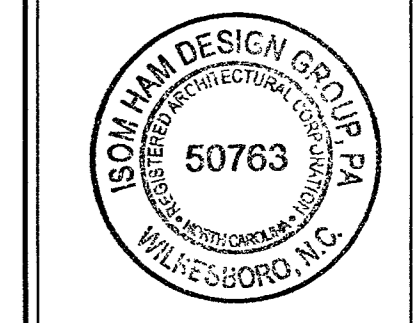


1
A10.10 SCALE 1/2" = 1'-0"

ALL CONTRACTORS AND SUB-CONTRACTORS SUBMITTING BIDS ON THIS PROJECT SHALL BE REQUIRED TO RECEIVE THE ENTIRE SET OF DRAWINGS. BROKEN SETS ARE NOT ALLOWED FOR BIDDING PROJECTS. UNDER NO CIRCUMSTANCES ARE THE DRAWINGS TO BE SCALED !!

REVISIONS	BY	DATE	RCW	ROW	RCW	ROW
(1) - HARRIOTT 90% REVIEW COMMENTS		5/1/18				
(2) - HARRIOTT 80% REVIEW COMMENTS		8/1/18				
(3) - POOL BUILDING SECTION ADDED		11/15/18				

DRAWN BY	APPROVED
RCW	RWH
PROJ #	DATE
15030	06/02/17



QUALITY FIRST

isomham
DESIGN GROUP, PA
Architecture - Planning
1305 Collegiate Drive Wilkesboro, NC 28697 www.isomham.com

NORTH CAROLINA

BUILDING SECTIONS

aloft
HOTELS

WILMINGTON

SHEET
A10.10